

Issues with sow and piglet performance

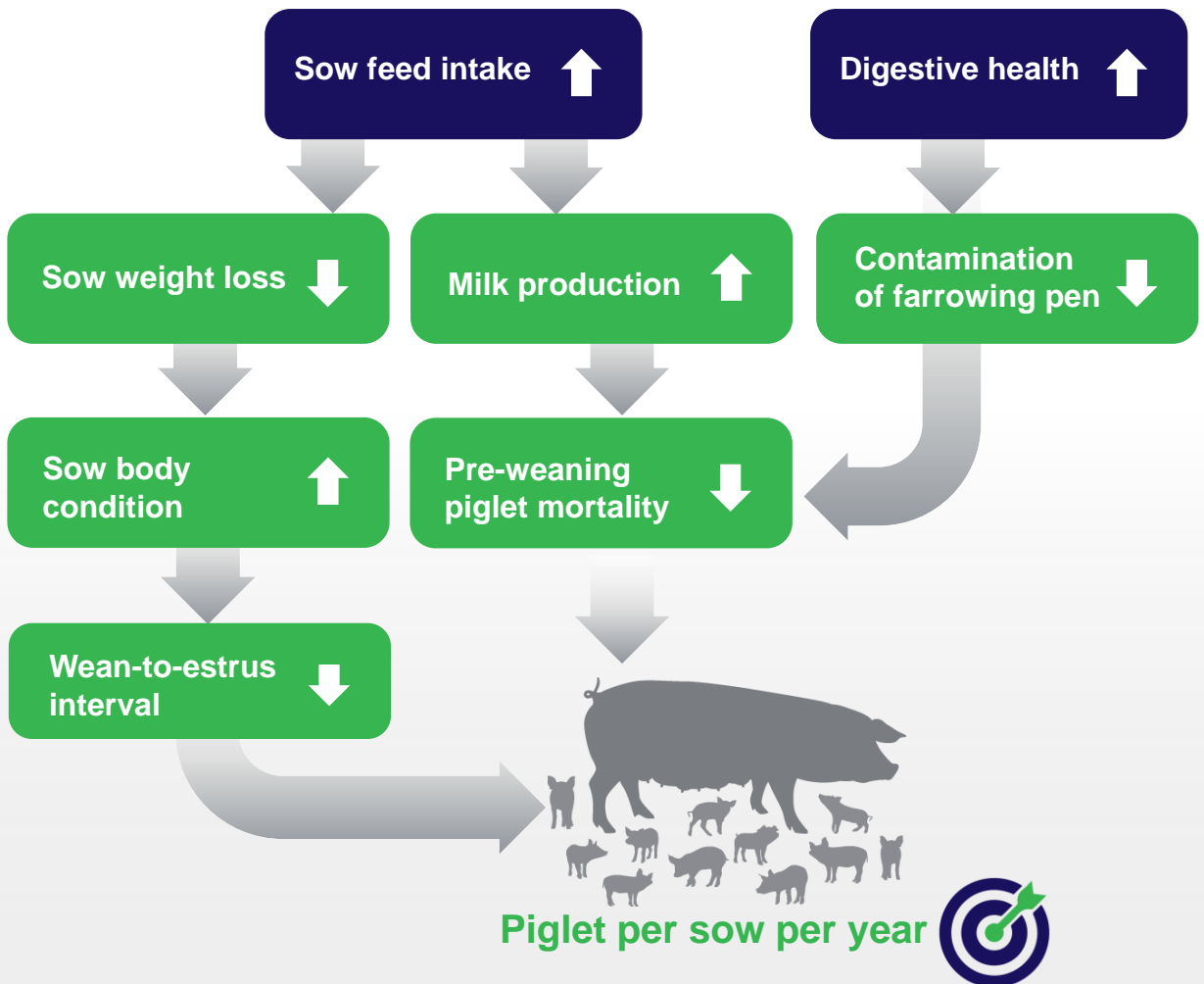
The most common challenges facing swine producers are:

- uniformity of piglet at birth and weaning;
- high pre-weaning mortality rate;
- poor sow body condition and backfat loss after farrowing; and
- transitioning off antibiotics growth promoters

To achieve piglet per sow per year targets, animal producers can focus on improving feed intake, and supporting sows' digestive environment.

Sows with higher feed intake retain more nutrients and energy, produce more milk for piglets, and return to production sooner. Contamination of farrowing pens can be reduced by enhancing sows' gut function. With healthier guts, sow faeces contain less pathogenic bacteria.

With sufficient milk and less exposure to bacteria, piglets are more likely to survive. Cinergy™ FIT 3S trials conducted by Provimi in Southeast Asia and globally on sows show positive results in addressing the challenges outlined above.



Trials with Cinergy™ FIT 3S show positive results in Southeast Asia*

Healthier sow returns to production sooner

Benefit for animal producer

Shorter Wean-to-estrus interval



Lactation

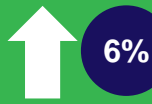
Weaning

Next Reproduction Cycle

Healthier sow produces more milk ensuring sufficient feed for piglets and livability

Benefit for sow

Higher sow feed intake



Better sow body condition



Benefit for piglet

Lower pre-weaning piglet mortality



* Similar global trials showed 8% improvement in sow feed intake, 60% improvement in pre-weaning piglet mortality, 40% improvement in sow body condition, 6% improvement in wean-to-estrus interval

Positive results are made possible by Provimi



5 essential oil compounds

Blend improves weight gain and intake through enhanced digestive function



Stabilization technology

Unique technology enables high processing and storage stability



Robust efficacy

Higher consistency and efficacy than comparable competitor products

[Contact us](#)
to enhance sow productivity and piglet livability

